

# ADO.NET Provider for Marketo: Setup Guide

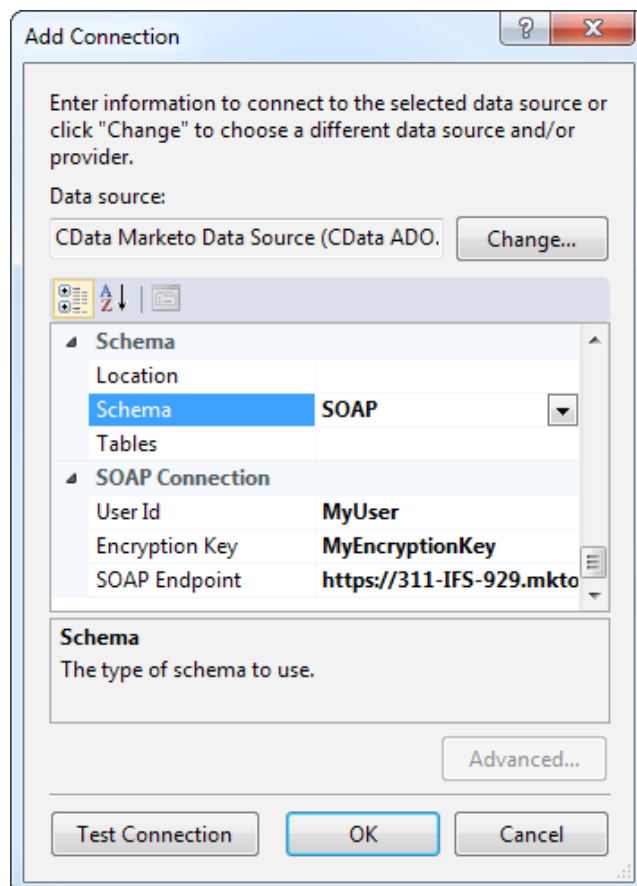
# ADO.NET Provider for Marketo: Setup Guide

After installation, the provider is ready to be used in Visual Studio, from Server Explorer, SSRS Reports, and designers such as the Model-First approach to Entity Framework.

## Establish a Connection

Follow the steps below to add a data source for Marketo in Server Explorer.

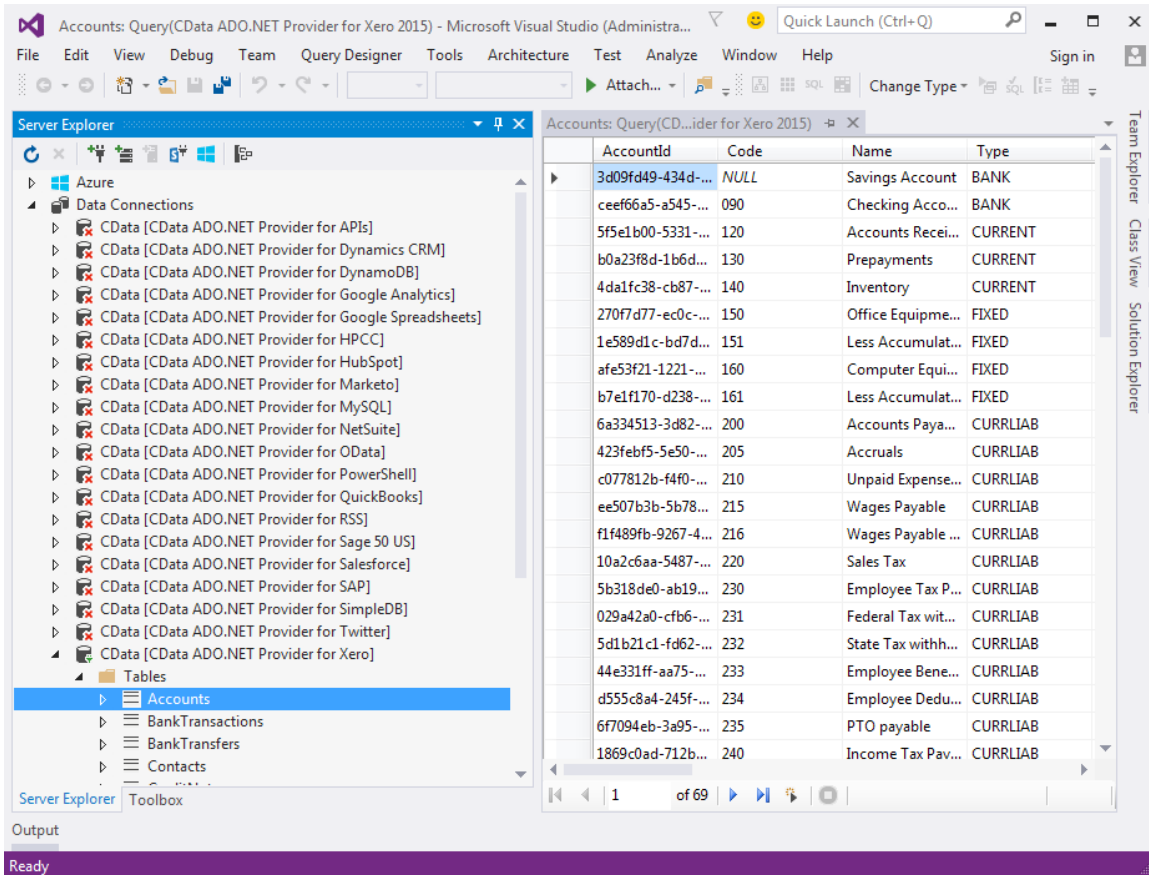
1. Open Visual Studio and in Server Explorer right-click the Data Connections node and click Add Connection. The Choose Data Source window is displayed.
2. Select the CData ADO.NET Provider for Marketo.
3. In the resulting dialog, set credentials and other connection properties to connect to your account. You can find guides on how to obtain the connection properties you need to connect to your Marketo account in the help documentation.



# Connect from Server Explorer

After defining the connection properties, you can access Marketo as relational tables, views, and stored procedures:

1. Expand the column definitions for each entity to analyze views and tables.
2. To execute a query, right-click a table or view and then click Retrieve Data. To call stored procedures, use the EXEC keyword.
3. To update a table or view, edit the grid.
4. Marketo tables available to be edited in Visual Studio.



## Next Steps

You can find more guides to working with Marketo data in ADO.NET in the CData knowledge base (KB) and help documentation. Free trials and free support are available.

### Download the Provider

To get started working with live Marketo data, download a free trial.

<http://www.cdata.com/drivers/marketo/download/>

### Driver Technology Documentation

The driver help documentation includes resources to help you connect to Marketo and use ADO.NET interfaces to read from and write to Marketo.

<http://cdn.cdata.com/help/DKA/ado/>

### Integration Tool Support

The CData knowledge base includes guides to using Marketo from ADO.NET applications.

<http://www.cdata.com/kb/?tab=prod&id=marketo&tech=ado>

### How to Contact CData Support

If you do not find a guide for your application in the knowledge base or have questions during your trial, use the support form.

<http://www.cdata.com/support/submit.aspx>

For more information on CData support packages, see the Support Options page.

<http://www.cdata.com/support/>